

X-YACHTS X-50
PERFORMANCE CRUISER



WORLD CLASS SINCE 1979

In 1979, one of today's most successful and quality orientated production yards was established in Denmark. During the 1980s, X-Yachts designed and built winning IOR yachts for World Class Racing. Our success with this market attracted the attention of the cruising market, which was then looking for fast, high quality and comfortable sailing yachts. It seemed very clear to us that we should use our boat building experience from the fast racers and combine this with building high performance cruising yachts.

Throughout the 1990s, X-Yachts Range of Performance Cruisers was established. The X-412 was the first model in the new line, and was followed by the X-512, X-382, IMX 38, X-442, X-362, X-332, X-302, X-612, X-482 and finally, in 1999, the X-562.

The new millennium was celebrated with the introduction of the IMX 40 racer - an almost unbeatable IMS and IRC performer. In early 2002, the IMX 45 followed her little sister onto the race course and continued the successful tradition worldwide. The first X-Yacht 73, built in 2001, was another milestone in the yard's history. She represented our entry into the luxury "deep water, cruising market".

The New Generation of Performance Cruisers

With the launch of the X-43 and X-46 in 2003, a new generation of performance cruisers was born. Three new models followed in 2004; the X-40, X-37 and X-50.

In summer 2006, the X-55 was launched and announced "European Yacht of the Year 2007"; a yacht with many of the elegant details of the IMX 70 racer/cruiser which was, itself, launched as a "State of the Art" yacht, with its modern yet classic design, in the summer of 2005. The baby sister of the range, the X-34, was launched in summer 2007.

One Design Classes

Following the traditions of the X-79 and X-99 as popular large fleet One Design racers, the X-35 was launched in autumn 2005 and is now an ISAF recognized class; only one year after her bigger sister, the X-41, was launched and achieved great success on the racing scene, under IRC and IMS, in her first year of sailing.

X-Yachts is owned by its three founders



Niels Jeppesen

Lars Jeppesen

Birger Hansen





DRIVER APPEAL

With her beautiful lines and open transom, the X-50 will turn heads while cruising under sail or lying on her mooring. The two independent steering positions provide added safety and will allow the helmsman a clear view ahead, even with full race crew on the rail. The X-50 has driver appeal, is responsive at the helm with maximum control and balance and she is very, very fast.

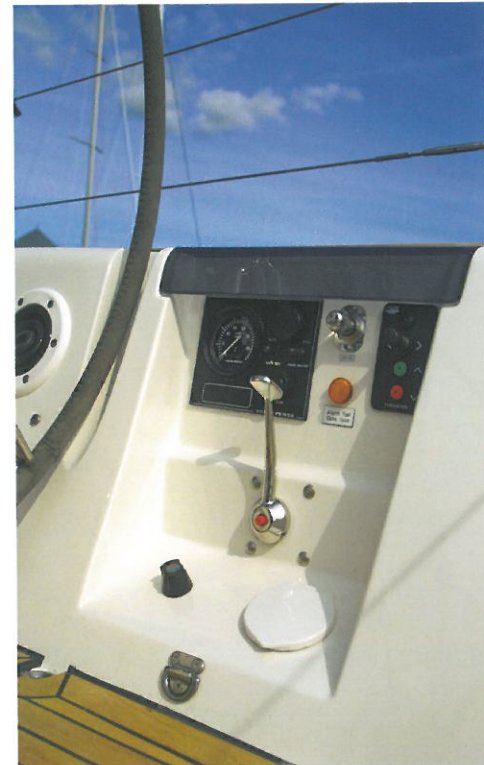
The deck has been kept clear of ropes by leading the mainsheet and other controls under the deck and coach roof on both sides to dedicated winches. The throttle and engine control panel are at hand for quick and easy manoeuvring into the marina and the elegant folding cleats are further examples of exquisite details that make the difference.



Control and trim lines led under deck



Foldable mooring cleat



Engine control panel



DESIRE FOR ELEGANCE

Pure X-Yachts refinement - from first grade teak veneers, laminated curved edges around the navigation station and pantry to teak floorboards with inserted décor lines – a yacht built to fulfil the owner's desire for elegance. Details such as recessed seals on lockers, smart and practical door restraints, high quality seals on the fridge and stainless steel hinges are further examples of X-Yachts' well-known craftsmanship and technical innovation.



Modern main cabin with centre sofa





Owner's cabin with centre berth



Owner's cabin with berth to port

COMFORT AND PRIVACY

The spacious saloon shown here in a modern version, is the centre for relaxing and preparing exquisite meals. The owner's cabin with en-suite head is offered with either centre berth or berth to port. The aft cabin provides peace and privacy at night and all berths throughout the yacht have battens and cold foam cushions for optimum comfort.



Aft cabin



PERFECTION

The X-50 is available in a 3-cabin modern and classic version - each cabin has its own head and offers the highest comfort and privacy. The 4-cabin modern version includes a separate crew cabin with bunk berth.

In the cockpit six people are easily seated at the teak table that when not in use is stowed away under the cockpit floor, as are the sheets and lines, in a small recessed compartment just in front of the main entrance. The life raft is stored in its own recessed compartment for safety on board.

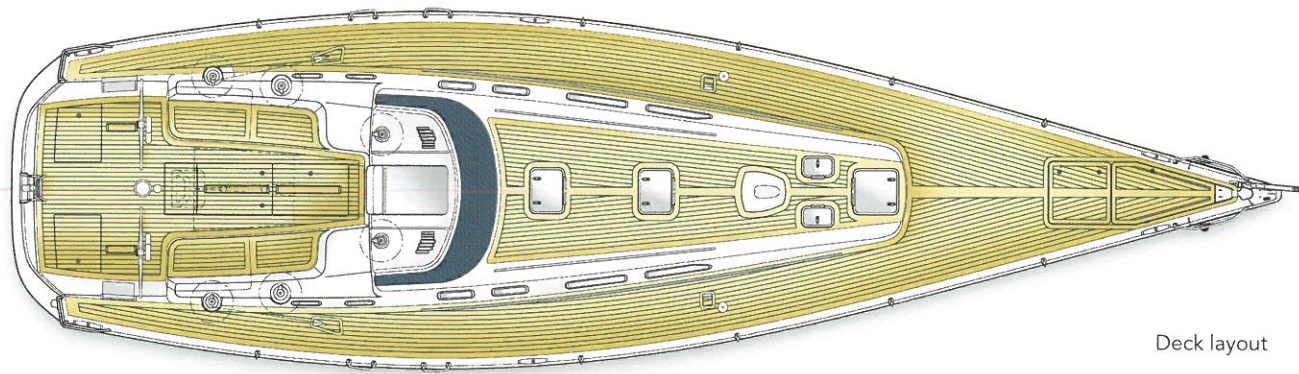
Buyers expect the highest standard of build quality and attention to detail. Therefore X-Yachts work relentlessly towards total customer satisfaction and each yacht is engineered without compromise to protect you and your crew.



Owner's head is easily partitioned into two sections by a foldable plexiglass wall.



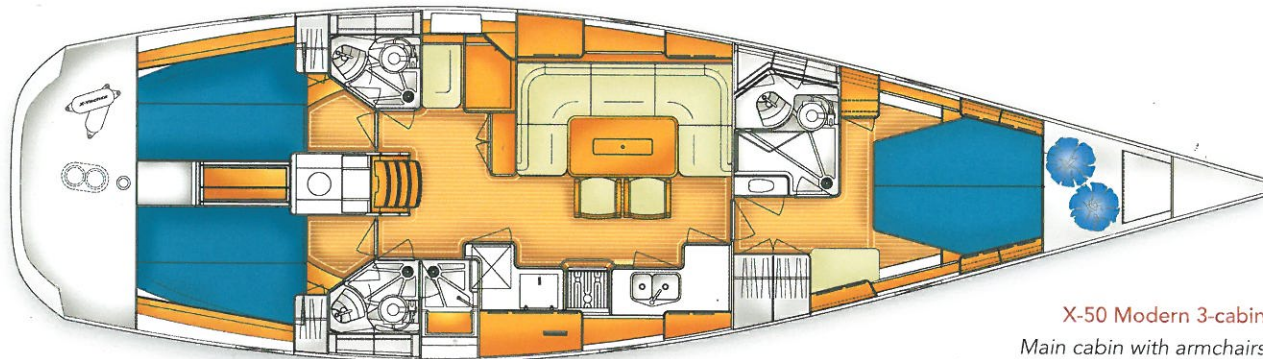
The classic version is offered with two comfortable armchairs and a pouf as an alternative to the starboard sofa and two chairs in front of the table.



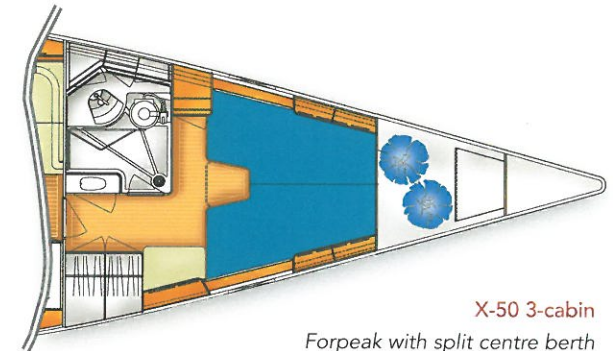
Deck layout



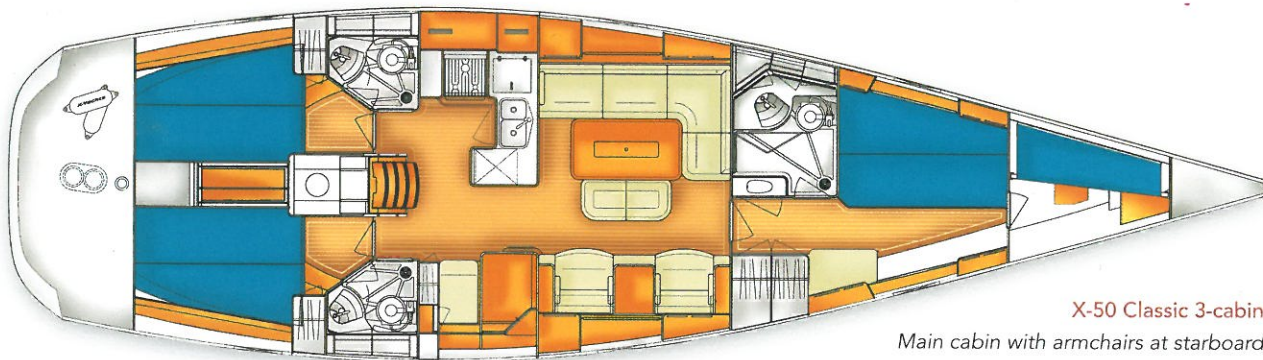
Resessed cockpit floor compartment for life raft



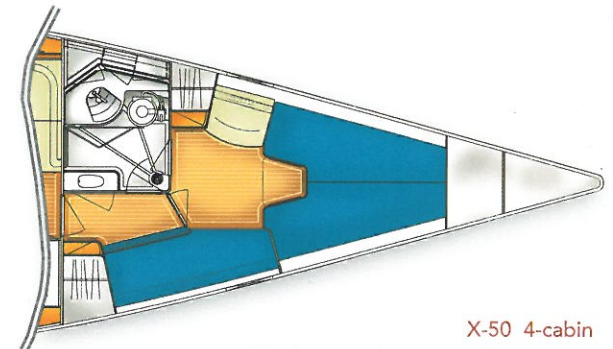
X-50 Modern 3-cabin
Main cabin with armchairs
Forepeak with centre berth and sail cabin



X-50 3-cabin
Forepeak with split centre berth
and sail cabin



X-50 Classic 3-cabin
Main cabin with armchairs at starboard
Forepeak with berth to port, access to sail cabin
with bunk berth



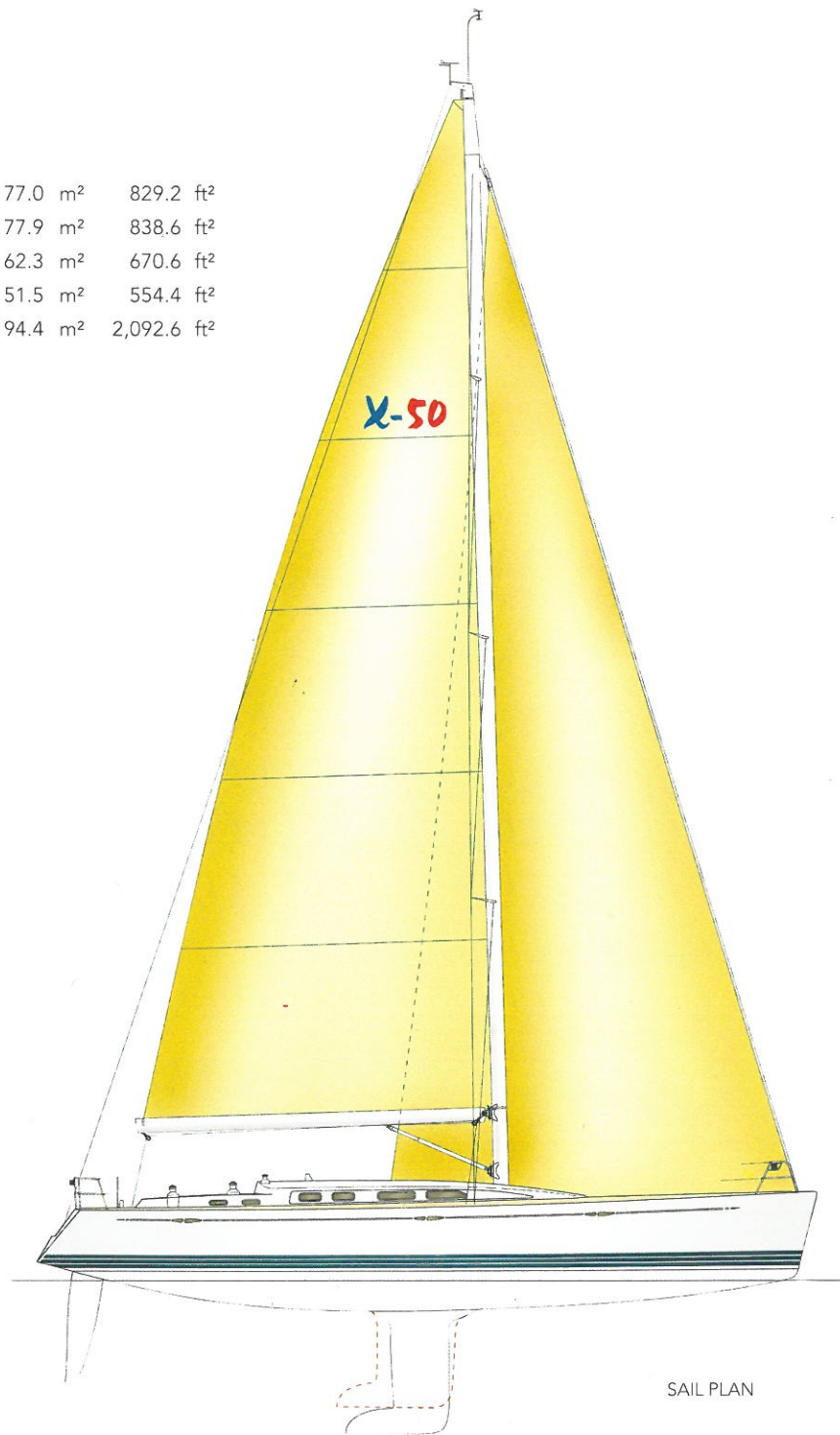
X-50 4-cabin
Forepeak with two cabins, split centre berth,
two bunk berths and small sail cabin

DIMENSIONS

Hull length	15.24 m	50.0 ft
LWL	13.14 m	43.1 ft
B. MAX	4.28 m	14.0 ft
BWL	3.63 m	11.9 ft
Standard draft	3.00 m	9.8 ft
Shallow draft 1	2.70 m	8.86 ft
Shallow draft 2	2.40 m	7.87 ft
Ballast	4,960 kg	10,935 lbs
Displ. std. empty approx.	12,400 kg	27,338 lbs
Engine diesel	55 kW	75 HP

SAIL AREAS

Mainsail	77.0 m ²	829.2 ft ²
135 % Genoa 1	77.9 m ²	838.6 ft ²
108% Genoa 3	62.3 m ²	670.6 ft ²
Self tacking Jib	51.5 m ²	554.4 ft ²
Spinnaker - All purpose	194.4 m ²	2,092.6 ft ²

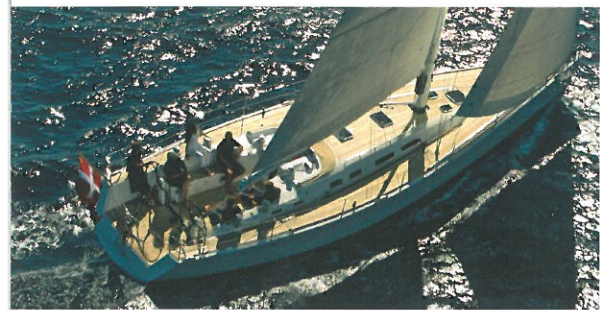


SAIL PLAN









X-50



X-Yachts
WORLD CLASS SINCE 1979

Fjordagervej 21 · 6100 Haderslev · Denmark · +45 74 52 10 22 · x-yachts.com