

X4<sup>9</sup>



## NO COMPROMISE

The X4<sup>9</sup> is the third model in the X range, aimed at the discerning sailor and his crew. It utilises advanced, proven technology and build techniques which only incorporate first class components, enabling the exploration of new uncharted horizons.

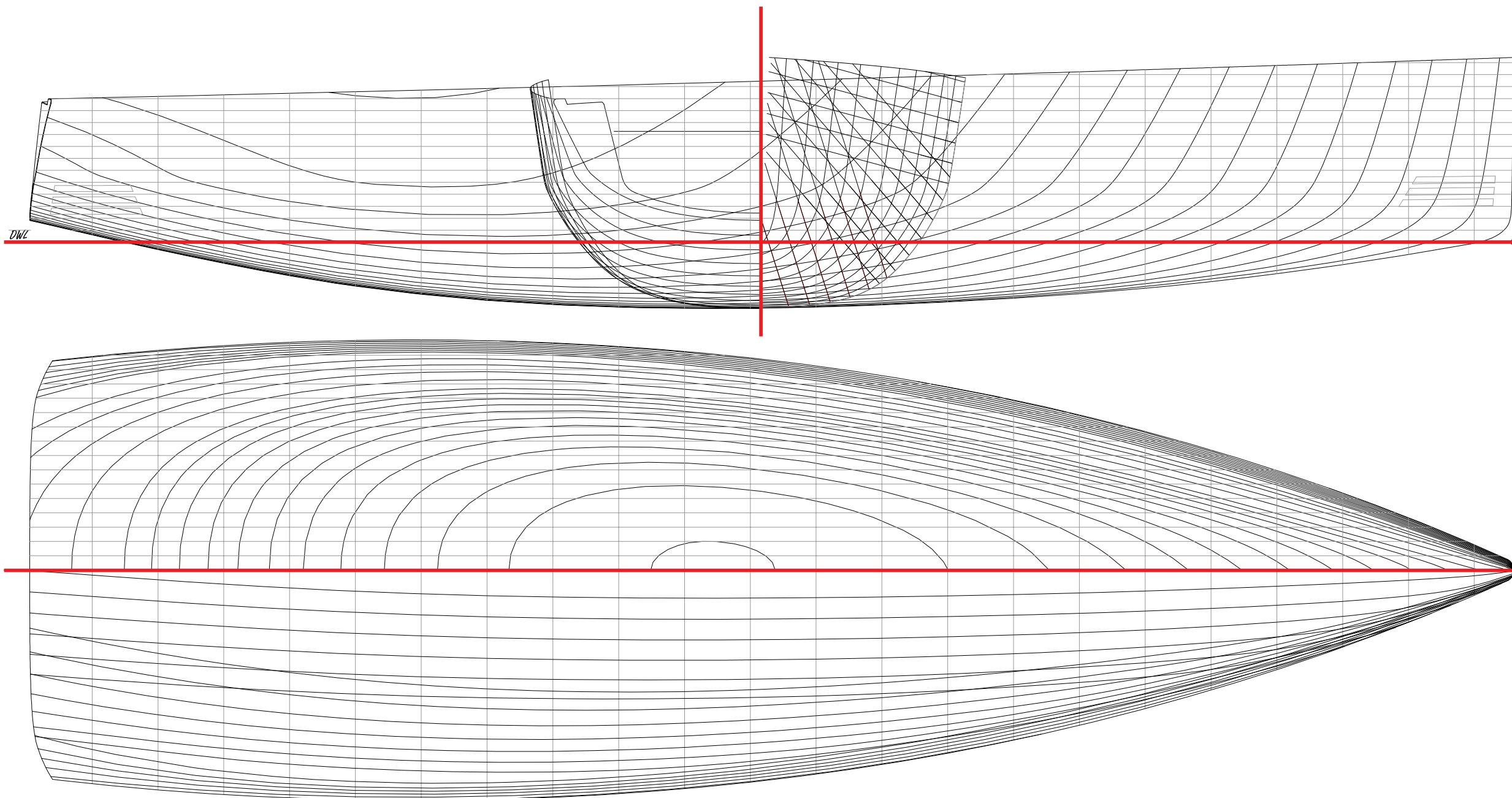
X-Yachts' background being the builder of award winning production yachts for more than three decades, is mirrored in the X4<sup>9</sup>'s technical specification.

Oven baked, vacuum infused epoxy / sandwich hull, galvanized keel hull girder - pioneered by X-Yachts since 1981, epoxy encapsulated composite iron / lead keel with low centre-of-gravity is faired to original keel sections, discontinuous rod rigging with hydraulic backstay adjuster, flush recessed and faired hull skin fittings, standard folding propellers and well specified deck fittings guarantee 'Superb Sailing Pleasure'.

The X4<sup>9</sup> offers an impressive sailing experience for the well seasoned sailor, designed for comfortable and safe cruising.







## BEHIND THE DESIGN

The X4<sup>9</sup>'s hull is designed to meet the demands from sailors who want to enjoy sailing in a wide range of conditions. Achieving comfort when sailing to windward in a rough sea was an essential prerequisite in the X4<sup>9</sup> hull design. Generous stability, modern displacement and a powerful yet easy to control sail plan offers smooth sailing through the waves.

Unlike mainstream modern yacht designs, the X4<sup>9</sup> is meant to be enjoyable and easy to handle in more than just 'reaching' conditions. A lot of focus was put on the upwind performance and sea keeping when choosing design parameters and various aspect ratios. This combined with the thoroughbred X-Yachts racing heritage delivers a new generation of world class cruising.

The X4<sup>9</sup> hull construction incorporates leading edge technology such as vacuum epoxy infused E-glass fibres in a sandwich M-foam construction, giving the hull the rigidity required to put the mast and rig in tension with very little deformation, avoiding "pumping".

Using E-glass instead of carbon skins delivers high overall strength and stiffness whilst producing a healthy resistance to local impact.

A high ballast ratio instead of an extremely beamy hull shape gives a comfortable stability. Wetted surface area and friction drag is minimised, essential for light wind performance.

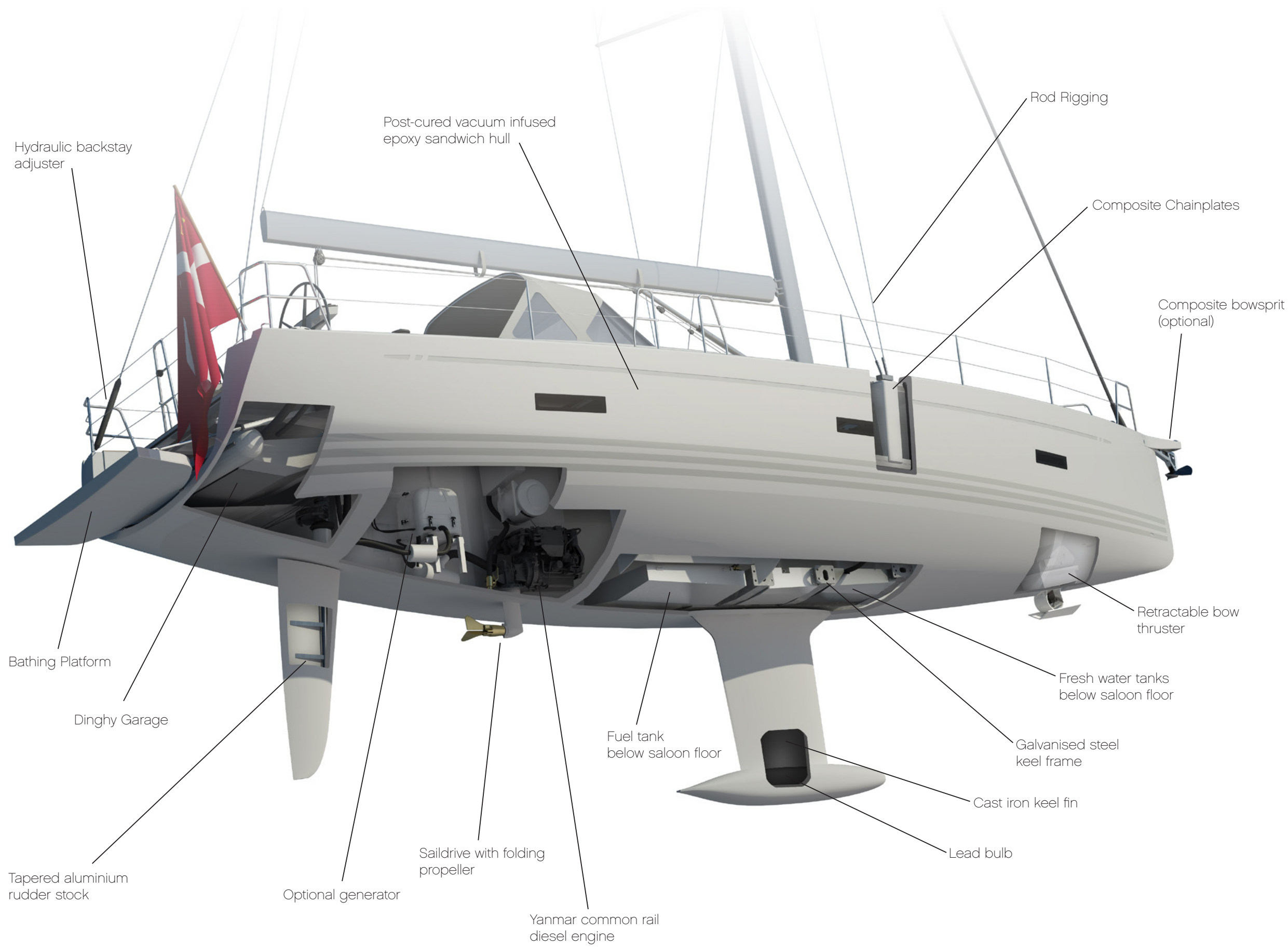


“The X4<sup>9</sup> is a lively yacht - with only little wind, she runs fast with a genoa. Nevertheless, she is also stiff easily handling Force 5 without reefing.

Jochen Rieker, Yacht Magazine (Germany)







## X-QUALITIES

The X4<sup>9</sup> combines many of the qualities found in both the Xc and Xp range into one perfectly formed yacht.

As with all X-Yachts weight distribution is key to performance and comfort at sea. On the X4<sup>9</sup> all the heaviest equipment has been placed as low as possible and as close to the centre line as possible. This greatly reduces pitching and slamming as well as increasing the righting moment.

The steel frame synonymous with X-Yachts also features on the X4<sup>9</sup>. The frame is bolted to the inside of the hull and takes all the loads from the keel and mast. This keeps the yacht stiff, strong and safe.

The X4<sup>9</sup> has three keel options to choose from, all of which feature a lead bulb and are encapsulated in a reinforced epoxy e-glass shell for improved performance.

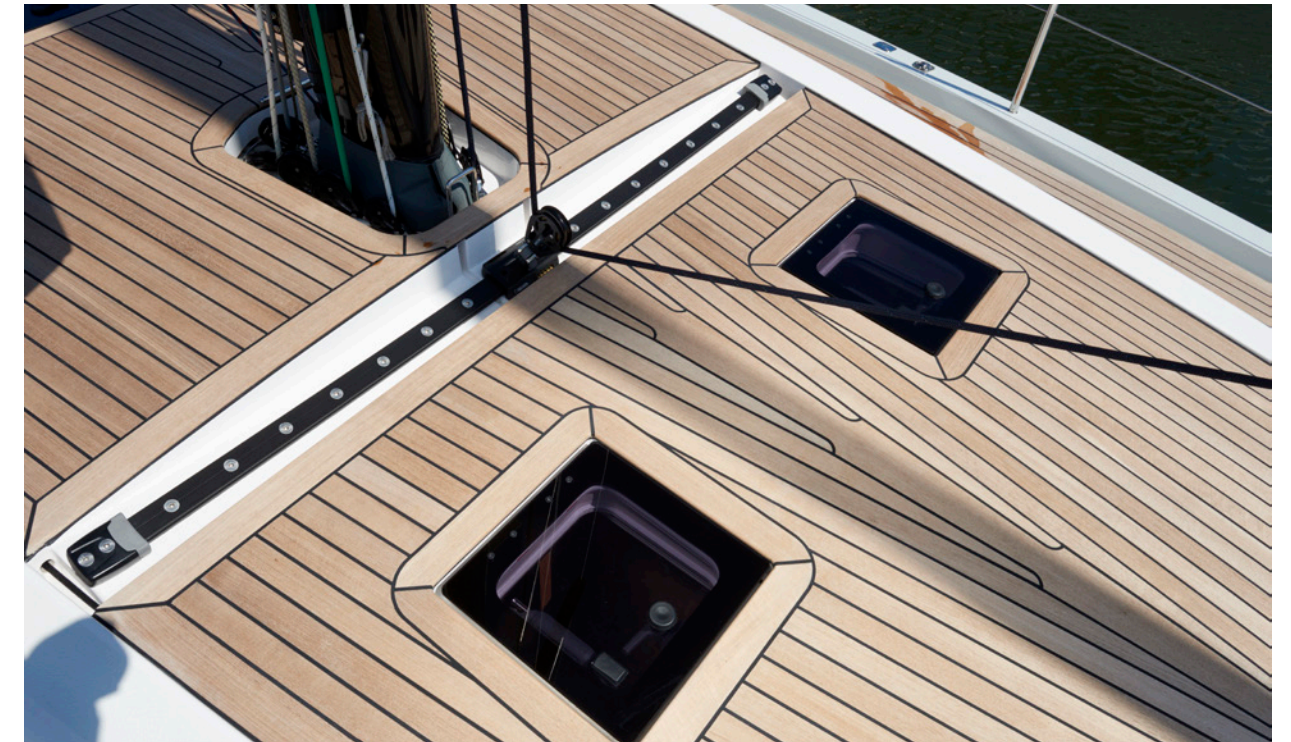
The recessed through-hull-fittings, folding propeller and retractable bow thruster all ensure minimal drag and resistance.

Whether opting for the standard Aluminium rig or upgrading to the carbon mast, rig control is hugely important. The X4<sup>9</sup> is fitted with discontinuous rod rigging to allow for a high tension rig that gives good control of the rig and sail shape.

The engineering installations on board the X4<sup>9</sup>, are all fitted by our team of engineers with almost 40 years experience ensuring everything is precision fitted to the highest standards.

All the deck equipment on board is supplied by industry leading suppliers ensuring every aspect of your X4<sup>9</sup> is reliable, easy to use and safe for many years to come.





## CLEAN & FUNCTIONAL

The X4<sup>9</sup> rewards the owner with a deck and rigging layout, designed for the discerning sailor.

Fractional triple spreader, tapered silver anodized aluminium mast stepped on steel frame has been specifically designed and engineered for the X4<sup>9</sup>. Optional carbon mast is also available.

The X4<sup>9</sup> is fitted with discontinuous rod rigging throughout with rod turnbuckles. Stainless steel chainplates for headstay, split backstay and shrouds.

The double ended mainsheet system with optional recessed track in the cockpit floor ensures mainsail controls are within easy reach of the helmsman, while the flush jib self-tacker makes short handed sailing a breeze. Optional genoa tracks mounted on the coachroof keep the side-decks clean and free of ropes whilst aiding upwind sailing performance.

Halyards and control lines are led aft, concealed below deck whilst the flush deck hatches and portlights add to the sleek clean lines and create a safe, clutter free environment.

Far Above: Deck recessed track for selftacking jib.

Above: Two spacious cockpit lockers, one dedicated for an 8-10 person liferaft and a large lazarette and sail locker offer ample above deck storage.



## MULTIPLE CHOICE

The X4<sup>9</sup> comes with a variety of optional additions on deck to ensure you can perfectly tailor the yacht to suit your personal needs and style.



### TEAK DECKS

Laid teak decks with seamless joints can be added to the side decks and coachroof. Flexiteak upgrade is also available.



### COMPOSITE WHEELS

Composite wheels give a modern look to the cockpit of the X4<sup>9</sup>



### FOLDING CLEATS

Upgrade to folding mooring cleats for a modern sleek style which also prevent lines catching.



### COLOUR VARIATIONS

Choose between light grey or white hull with either dark grey, light grey or dark blue waterlines



### ELECTRIC WINCHES

The Harken winches can be upgraded to be electrically powered for easy short handed sailing



### NAVIGATION EQUIPMENT

We factory fit a range of state of the art navigation equipment. See pricelist for more details.



### BIMINI & COCKPIT TENT

The X4<sup>9</sup> has optional cockpit and helmsman's biminis, providing protection from the sun and rain. Optional cockpit tent which forms an extension of the sprayhood is also available.

### BOWSPRIT OPTIONS



Standard GRP cowl, colour matched to hull with integrated anchor fitting.



Optional carbon bowsprit, colour matched to hull with integrated anchor fitting.



Optional carbon bowsprit in clear coat finish, with integrated anchor fitting.

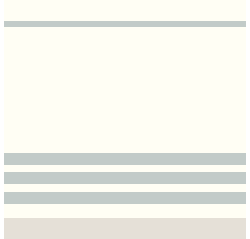




**HULL TRIM STRIPES**

The standard X4<sup>9</sup> comes in a white gelcoat with light grey (RAL7035) waterlines and sheerline stripes.

However we have options for the boat to come in a number of colour-ways displayed below.



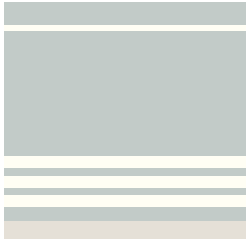
White hull with light grey stripes



White hull with black grey stripes



White hull with dark blue stripes



Light grey hull with pure white stripes

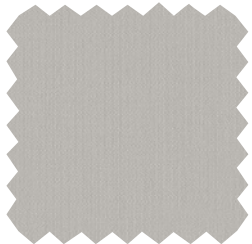


Black grey hull with pure white stripes

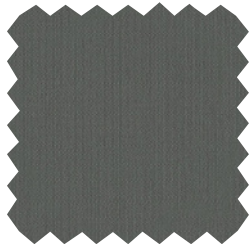
**HULL STYLE OPTIONS**

**EXTERIOR FABRICS**

Choose between light grey (Swela 37362), dark grey (Swela 37365), dark blue (Swela 37395) or light brown (Swela 37329) for sprayhood, bimini, cockpit tent, cockpit cushions, boom cover, forestay cover, cockpit table and wheel covers. Other colours on request.



Light Grey (Swela 37362)



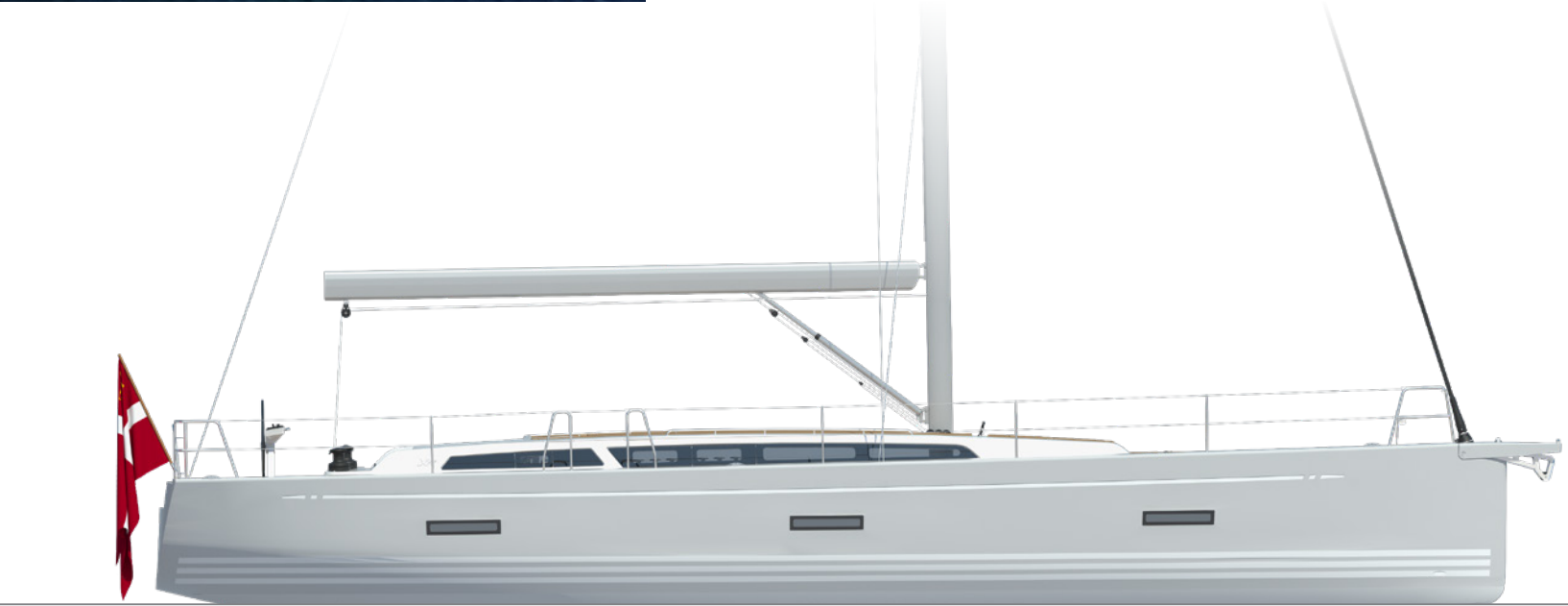
Dark Grey (Swela 37365)



Dark Blue (Swela 37395)



Light Brown (Swela 37329)



Above: Light grey hull with white waterlines and sheer line stripes.





Far Above: Standard transom with electrically operated bathing platform and space for inflatable dinghy.

Above: Optional 'fixed' cockpit table with two hinged leaves resting on stainless steel legs with central storage box. Can be unbolted from the deck plates in a few minutes to set up the cockpit for racing.



## OUTDOOR LIVING

The cockpit space on board the X4<sup>9</sup> is not only designed to be functional and safe while at sea but has also to create a luxurious outdoor living space.

The twin wheels and optional recessed mainsheet track mean the cockpit area is spacious and uncluttered. Teak cockpit sole and teak on cockpit seats come as standard on the X4<sup>9</sup>.

The standard electrically operated bathing platform creates a perfect area for relaxing as well as easy access from the water or dinghy. A deck shower is fitted as standard.

The high back rests not only offer protection while at sea but also create a comfy seating area, especially with the addition of the fitted cockpit cushions.





Above: The interior photos featured in this brochure show 'Bleached Oak' wood finish and 'Walnut' floorboards with Navy 'Just Fleckless' fabric on the cushions. For more information, see page 25 for available interior finishes.

## SPACIOUS LIVING

Danish design and architecture is famous for its clean, timeless style. It showcases luxury whilst also being functionally designed to work either out on the open seas or moored up in harbour.

Superior quality, detailed interior carpentry and materials used sets it apart from mass produced boats, producing an exquisite, natural interior.

Numerous deck and hull portlights allow for ample light to flood in, gifting the interior with a bright and roomy ambiance.

Plentiful storage space throughout allows for an uncluttered, 'live on board' lifestyle, giving you a place one can retreat to when the weather outside is less forgiving.





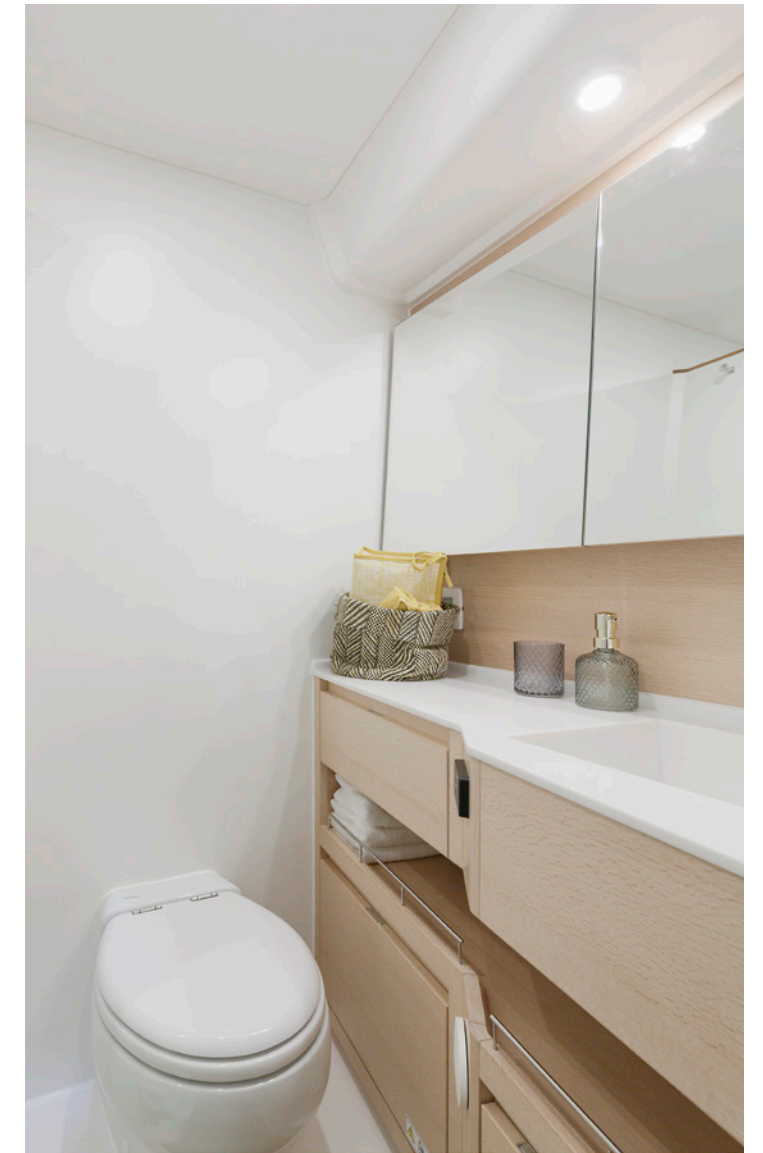
## SALOON

The spacious saloon has a large dining table with integrated wine bottle compartment on port side and can accommodate 6 guests comfortably.

Stylish bookshelves located behind the nav station and saloon seating together with the upper cabinets (bottom hinged doors) on either side of the saloon provide ample storage for your items.

The nav station is the X4<sup>9</sup>'s communication centre as well as the main hub for the yacht's electrical systems. The standard layout offers a forward facing nav station (Image above features Layout Option 1 featuring aft facing nav station)





Above: Owner's head with optional Tecma electric toilet, Corian counter top with integrated sink and innovative storage.

Left: Owner's cabin shown with optional top-lockers and beauty table. The double berth has hinged gas strut supported top access and drawers underneath as standard.

## OWNER'S CABIN

Owner's cabin comes with plentiful storage throughout including a large double wardrobe with shelves and hangers and dual storage space under the double berth, in the form of two drawers and extra storage below the lift-up mattress.

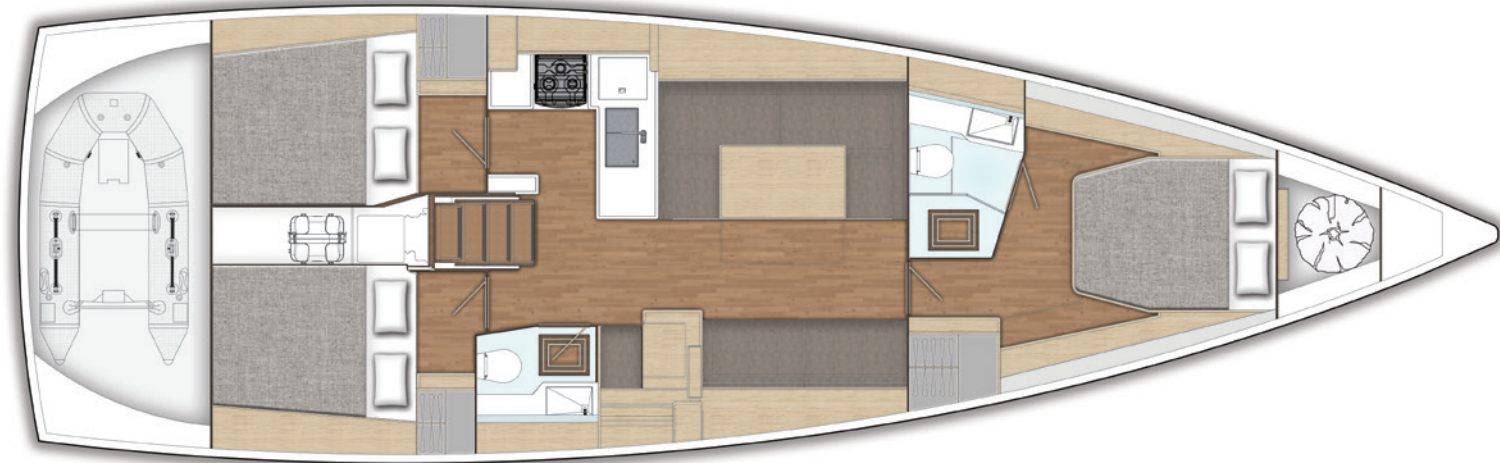
All berths have marine plywood support with ventilation holes for improved comfort and air circulation.

The X4<sup>9</sup> comes as standard with Nordic Oak furniture and with teak without koto laminated floor.

As standard the X4<sup>9</sup> has an owner's cabin heads with dedicated shower compartment that creates a luxurious self-contained owner's en-suite.



# INTERIOR LAYOUTS



Standard Layout - 3 double cabins



Optional Layout - double & twin cabins aft, aft facing chart-table with dedicated shower compartment in the aft heads

## INTERIOR SURFACES

The X4<sup>9</sup> comes as standard with Nordic Oak furniture, teak without koto laminated floor and white Corian tops in the galley. However with many options to choose from you can create an interior style that suits you.

### WOOD SURFACE



Oak (Standard)

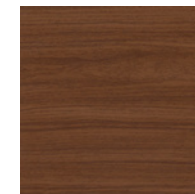


Teak

### FLOORBOARDS

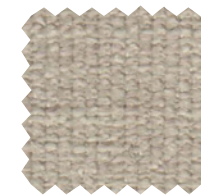


Teak without koto (Standard)



Walnut

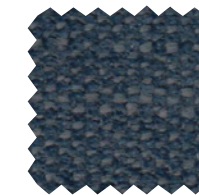
### FLECKLESS FABRICS



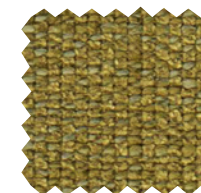
Just Fleckless 01 Nature



Just Fleckless 05 Camel



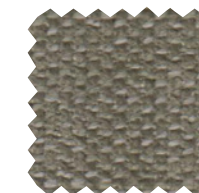
Just Fleckless 10 Navy



Just Fleckless 403 Bambus



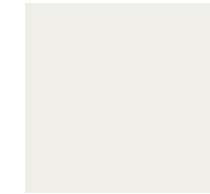
Just Fleckless 710 Moon Grey



Just Fleckless 750 Olive Grey

The material of this upholstery fabric can be easily cleaned with a cotton cloth and distilled water, 85% Polyester, 15% Viscose. Weight: 710 g +/- 5%.

### GALLEY WORK TOPS



Camoan White Corian (Standard)



Black Quartz Corian

### MICRO FIBRE FABRICS



Alsace Blue



Alsace Ivory



Alsace Sand



Nubilux 709 Argent

Alsace and Nubilux; Micro-fibre fabrics are extremely easily cleaned. 100% Polyester Micro fibre fabrics has knitted back and velour surface. Breathable, durable and abrasion resistant.





**X4<sup>9</sup> DIMENSIONS**

Overall Length	15.08 m	49.47 ft
Hull length	14.50 m	47.57 ft
LWL	13.25 m	43.5 ft
Beam	4.49 m	14.73 ft
Standard draft	2.40 m	7.87 ft
Deep draft (T-keel)	2.71 m	8.89 ft
Ballast (standard)	5,450 kg	12,015 lbs
Displacement (light)	12,900 kg	28,440 lbs

**ENGINE/TANKS**

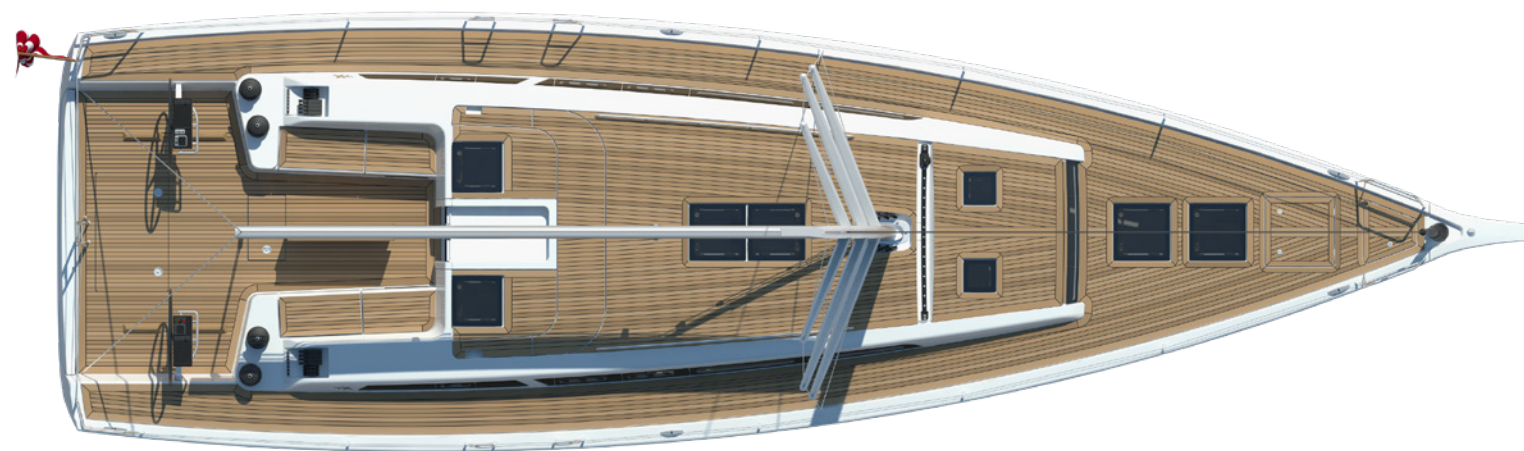
Engine diesel	42.5 kW	57 HP
Fuel tank	300 Ltr	52.83 Gal (US)
Water tank	310 Ltr	85.85 Gal (US)
Additional tank	85 Ltr	81.9 Gal (US)

**SAIL AREAS**

P = 19.00 m, E = 6.60 m, IG = 19.76, ISP = 21.07, J = 5.45

Mainsail (aluminium mast)	72.2 m <sup>2</sup>	777 ft <sup>2</sup>
88% selftacking Genoa	48.1 m <sup>2</sup>	518 ft <sup>2</sup>
106% overlapping Genoa	57.2 m <sup>2</sup>	616 ft <sup>2</sup>
Asymmetric spinnaker	230 m <sup>2</sup>	2,475 ft <sup>2</sup>

Sail areas are based on standard mast. Fractional, tapered silver anodized aluminium mast is standard 2-spreader aluminium mast. Optional carbon mast/boom on request.





---

***X-Yachts***<sup>®</sup>  
WORLD CLASS SINCE 1979